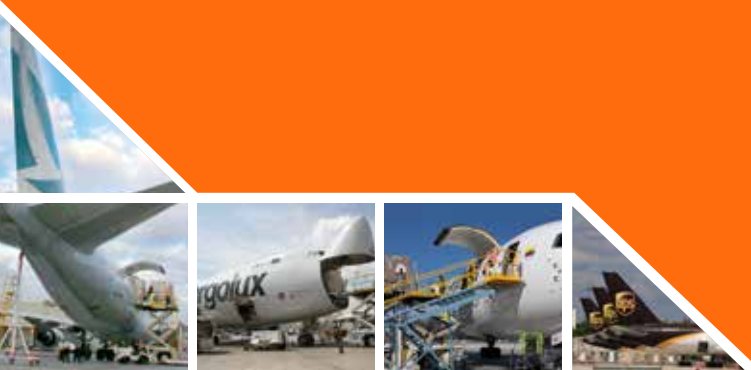
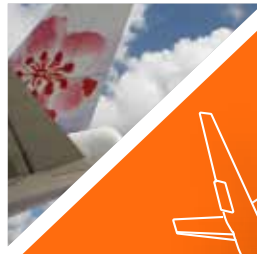


CARGO HUB 2021



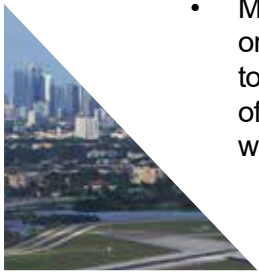


MIA CARGO HUB



CARGO & TRADE STATISTICS

- #1 in the USA in International Freight
- High Ranking Global Freight Hub
- 2.33 Million U.S. Tons Total Freight
- Tonnage: 82% International / 18% Domestic; with 89% on freighters / 11% on passenger aircraft
- 55% of International Freight is originating and clearing at MIA
- 45% of International Freight is In-Transit
- MIA air trade valued at \$52.7 billion, or 91% of the dollar value of Florida's total air imports and exports, or 40% of the States total (air & sea) trade with the world
- MIA handles 85% of all air imports and 80% of all exports between the US and Latin American/Caribbean region
- Hub for distribution of perishable products, hi-tech commodities, telecommunications equipment, textiles, pharmaceuticals and industrial machinery
- MIA cargo facilities encompass 18 warehouses with a total of 2.8 million square feet (216,413 square meters) of warehouse space with combined warehouse and office space at 3.66 million square feet (339,836 square meters) including nearly 395,276 square feet (36,722 square meters) of on-airport refrigerated warehouse space for temperature controlled products
- Freighter aircraft parking includes 41 common-use cargo positions and 31 leased cargo positions



MIA Top Commodity Groupings - 2020

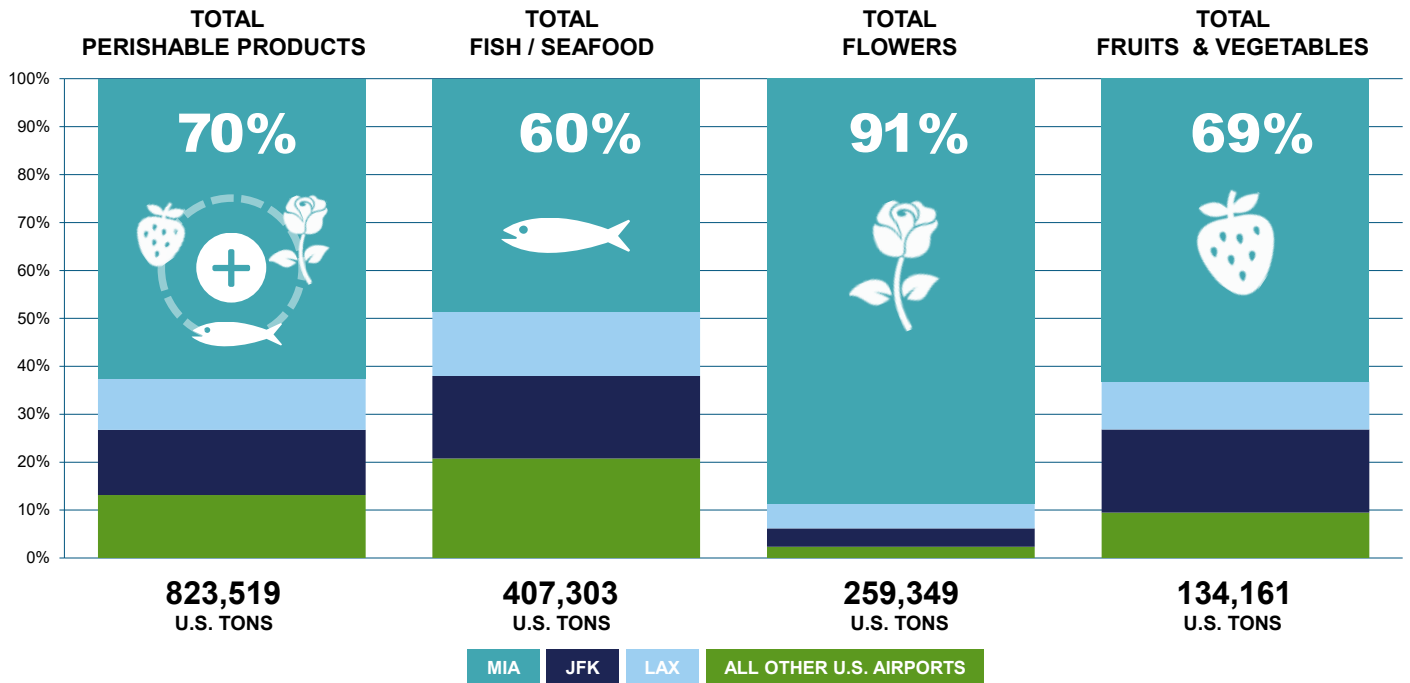
Exports	Tons	Dollars
Industrial Machinery / Parts	24,546	\$1,692,009,355
Computers / Peripherals	24,253	\$4,346,819,177
Vehicle Parts/Tires	18,703	\$500,195,922
Telecommunications Equipment	18,184	\$3,015,316,273
Pharmaceuticals	16,308	\$3,181,998,815
Imports	Tons	Dollars
Fish/Crustaceans	242,083	\$1,725,438,576
Flowers	236,706	\$1,183,201,592
Vegetables & Roots	59,775	\$113,816,308
Fruits & Juices	31,985	\$77,999,155
Seeds & Grass	13,958	\$81,343,227

MIA Trade with All Regions - 2020

	Total Tons	Total Dollars
SOUTH AMERICA	743,211	\$27,867,646,734
CENTRAL AMERICA	119,019	\$5,306,773,602
EUROPE	64,038	\$8,426,081,105
ASIA	44,852	\$6,801,071,763
THE CARIBBEAN	44,008	\$1,798,255,563
NORTH AMERICA	16,315	\$1,251,583,061
THE MID-EAST	6,551	\$773,936,358
AFRICA	3,077	\$401,171,684
OCEANIA	718	\$100,843,695
All Regions	1,041,789	\$52,727,363,565

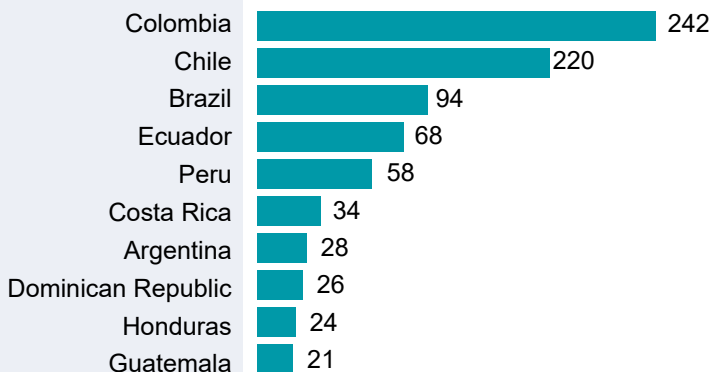
NOTES: Mexico is included in North America • Origin/Destination Trade Only • Does not include In-Transit Freight

MIA LEADS ALL U.S. AIRPORTS IN PERISHABLE CARGO (2020 STATISTICS)

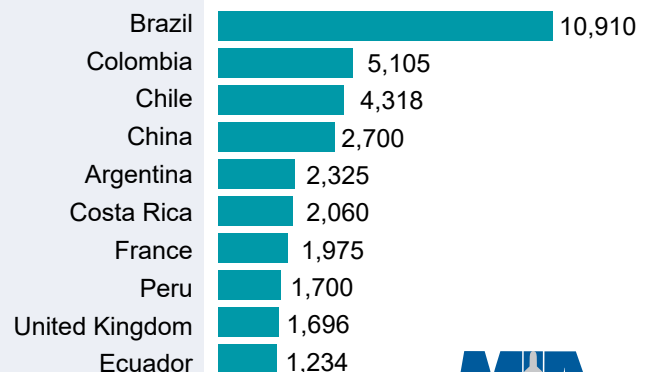


MIA - TOP TRADE PARTNERS 2020

By Total Weight (Thousands US Tons)



By Total Value (Millions US Dollars)



KEEPING MIA COMPETITIVE

MIA PHARMA HUB

MIA is an IATA designated Pharma Hub and is working with local MIA participants toward CEIV Pharma Certification. MIA pharma imports and exports totalled \$3.7 billion in 2020.

MIA FOREIGN TRADE ZONE

MIA gained final approval from the U.S. Department of Commerce to designate MIA as a Foreign Trade Zone (FTZ) magnet site. The MIA FTZ creates new synergies for on-airport businesses.

MIA CARGO CLEARANCE CENTER

A 24/7 on-airport operation centralizes the functions of Customs and Border Protection (CBP), providing for trade documentation processing.

MIA ANIMAL & PLANT HEALTH INSPECTION SERVICE (APHIS) FACILITY

Consolidates the functions of Veterinary Services and Plant Protection & Quarantine from four locations into a single site. The USDA facility houses the Veterinary Services' import and export operations.



“ MIA's capital improvement program includes a comprehensive, long-term initiative to maximize existing cargo operations & double capacity, by maximizing current use of facilities; demolishing and replacing aged and costly structures; and developing new cargo facilities in the future. ”

MIAMI-DADE COUNTY

Daniella Levine Cava
Mayor



BOARD OF COUNTY COMMISSIONERS

José “Pepe” Díaz
Chairman

Oliver G. Gilbert, III
Vice Chairman

Oliver G. Gilbert, III
District 1

Jean Monestime
District 2

Keon Hardemon
District 3

Sally A. Heyman
District 4

Eileen Higgins
District 5

Rebeca Sosa
District 6

Raquel A. Regalado
District 7

Danielle Cohen Higgins
District 8

Kionne L. McGhee
District 9

Senator Javier D. Souto
District 10

Joe A. Martinez
District 11

José “Pepe” Díaz
District 12

René Garcia
District 13

Harvey Ruvin
Clerk of Courts

Pedro J. Garcia
Property Appraiser

Geri Bonzon-Keenan
County Attorney

Ralph Cutié
Aviation Director
& Chief Executive Officer

Miami-Dade County provides equal access and equal opportunity in employment and services and does not discriminate on the basis of disability.

“It is the policy of Miami-Dade County to comply with all of the requirements of the Americans with Disabilities Act.”



America's Global Gateway
iflyMIA.com • marketing@flyMIA.com

