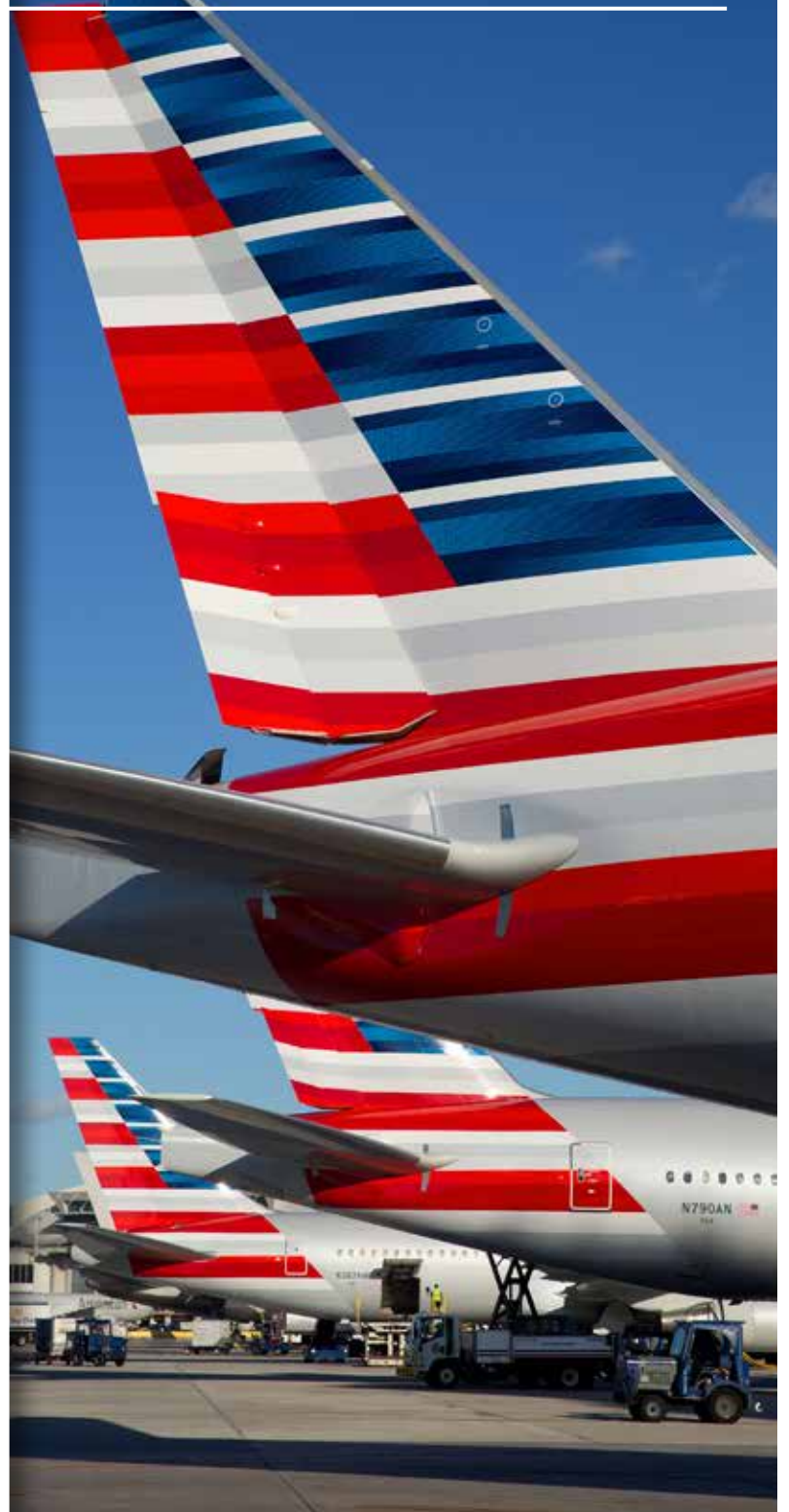
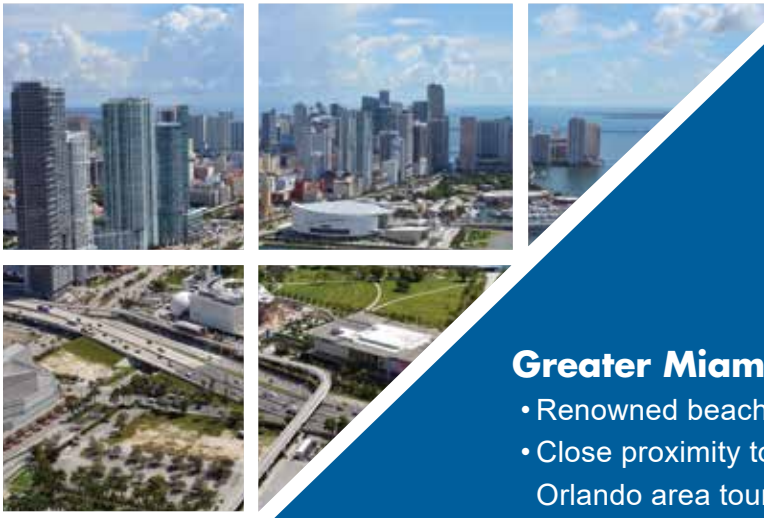


GATEWAY TO THE AMERICAS

MIAMI INTERNATIONAL AIRPORT



2021 **MIA**
MIAMI INTERNATIONAL AIRPORT



MIAMI SERVES A LARGE and DIVERSE TRAVEL MARKET

Greater Miami Offers:

- Renowned beaches and world class attractions
- Close proximity to the Florida Keys and all of the Orlando area tourist attractions

MIA 2020 STATISTICS

19 MILLION



- Passengers, making MIA the 2nd leading International gateway to the USA following New York's JFK.
- Largest gateway to Latin America/Caribbean region with over 1,000 weekly departures to 64 destinations in the region.
- MIA is Florida's leading International gateway, handling nearly 60% of Florida's total International Passenger traffic.

11.6 MILLION



- Miami Visitors in 2020

2.5 MILLION



- International visitors

5.7 MILLION



- Domestic visitors

3.4 MILLION

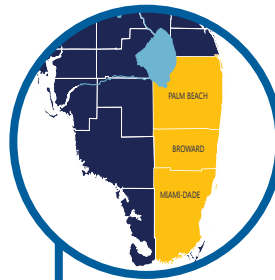


- Florida resident visitors

OVER 97%



- Arriving cruise passengers at MIA using PortMiami



6.1 MILLION Metropolitan Residents

- 1 of the top 10 largest metropolitan areas in the U.S.
- Miami-Dade County accounts for almost half of the population of South Florida.

\$52.7 BILLION



- MIA's 2020 Air Trade Value for imports / exports.

**MIAMI BUSINESS
MARKETS**



- Hemispheric Center For Commerce In The Americas.
- Extensive business infrastructure and a multicultural, multilingual population.

OVER 1,000



- Multinational Corporations in the Miami/ South Florida area.

**SECOND LARGEST
CONSULAR CORPS
IN THE USA**



- **72** Consulates
- **29** Bi-national Chambers of Commerce
- **14** Foreign Trade Offices
- **3,100** Financial Institutions (*including branches*)
- **22** Foreign Bank Agencies

MIA 2020 - 2021 – NEW AIRLINES & NEW ROUTES



AMERICAN AIRLINES:

Paramaribo, Suriname;
Tel Aviv, Israel



EMIRATES:

Dubai, UAE



FRONTIER AIRLINES:

Baltimore, Myrtle Beach,
Orlando, Nassau,
Cancun, Guatemala
City, Santo Domingo,
Punta Cana, Montego Bay



JETBLUE AIRWAYS:

Boston, New York (JFK),
Newark, Los Angeles,
Hartford



EASTERN AIRLINES:

Asuncion, Paraguay;
Montevideo, Uruguay



SOUTHWEST:

Atlanta, Austin, Baltimore,
Chicago Midway, Dallas
(Love Field), Denver,
Houston (Hobby), Nashville
and St. Louis

IMPROVING THE PASSENGER EXPERIENCE WITH TECHNOLOGY

Miami International Airport is using the latest technological advancements to make entering the United States quicker and easier. These automated solutions help travelers expedite the entry process.



BIOMETRIC FACIAL RECOGNITION: INBOUND PASSENGERS

- Verifies a traveler's identity by matching their facial image to the passport they are presenting.
- Decreased processing times by as much as 80% while maintaining 99% accuracy.
- Offered in the Central Terminal, through Customs and Border Protection.



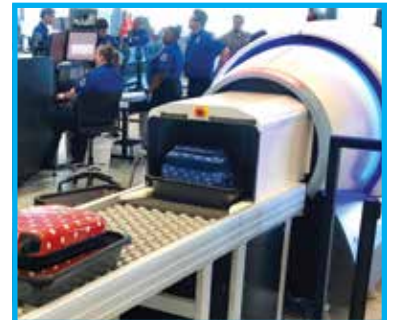
BIOMETRIC FACIAL RECOGNITION: OUTBOUND PASSENGERS

- Allows passengers to board with a quick click of a camera instead of a boarding pass or passport.
- Currently offered at select gates in the South Terminal.



GLOBAL ENTRY

- Allows for expedited clearance for pre-approved, low-risk travelers upon arrival in the United States.
- MIA has 16 automated Global Entry kiosks; 12 in the North Terminal and 4 in the South Terminal.



TSA CHECKPOINT 3-D SCANNING

- The new technology provides improved explosives detection capabilities at the checkpoint.

New On-Airport Hotel



New Commuter Gates



Enhanced Check-in Experience



MODERNIZING & TRANSFORMING MIA FOR THE FUTURE

CONCOURSE "F" MODERNIZATION & CENTRAL TERMINAL REDEVELOPMENT

- Create new consolidated checkpoint with raised roof and natural light, equipped with advanced screening lanes
- Enhance airline ticket counters with increased queue space and raised ceilings
- Expand holdrooms with concessions

REDEVELOPMENT OF NORTH TERMINAL'S REGIONAL COMMUTER FACILITY

- Provide adequate holdroom space & improve the passenger experience
- Improve parking layout to serve additional and larger aircraft

SOUTH TERMINAL APRON AND GATE EXPANSION

- Provide 6 domestic narrow body aircraft gates
- Improve passenger experience with additional post-security concessions space

NEW HOTEL DEVELOPMENT

- Build a new on-airport hotel with direct access to the terminal area

MIAMI-DADE COUNTY

Daniella Levine Cava
Mayor



BOARD OF COUNTY COMMISSIONERS

José "Pepe" Díaz
Chairman

Oliver G. Gilbert, III
Vice Chairman

Oliver G. Gilbert, III
District 1

Jean Monestime
District 2

Keon Hardemon
District 3

Sally A. Heyman
District 4

Eileen Higgins
District 5

Rebeca Sosa
District 6

Raquel A. Regalado
District 7

Danielle Cohen Higgins
District 8

Kionne L. McGhee
District 9

Senator Javier D. Souto
District 10

Joe A. Martinez
District 11

José "Pepe" Díaz
District 12

René Garcia
District 13

Harvey Ruvin
Clerk of Courts

Pedro J. Garcia
Property Appraiser

Geri Bonzon-Keenan
County Attorney

Ralph Cutié
Aviation Director
& Chief Executive Officer

Miami-Dade County provides equal access and equal opportunity in employment and services and does not discriminate on the basis of disability. "It is the policy of Miami-Dade County to comply with all of the requirements of the Americans with Disabilities Act."



America's Global Gateway
iflyMIA.com • marketing@flyMIA.com

